



Bid Huisie
PRINCE ALBERT



Bid Huisie – A little gem in the Great Karoo, Western Cape

In the middle of the peaceful Great Karoo in the Western Cape lies a quaint little village set amid beautiful natural surroundings. Just 42 kilometres off the N1 south towards Cape Town, you will find Prince Albert at the foot of the majestic Swartberg Mountain Range. Little has changed here since the first settlers founded this idyllic town around 250 years ago.

Walking down tree-lined streets with their lovingly preserved Cape Dutch and Victorian buildings, you hear the gentle murmur of water flowing in the village's irrigation furrows. Here, rural life is peaceful and unhurried, where friendly townsfolk greet friends and strangers alike with a smile and a wave. Nominated for Town of the Year in 2012, Prince Albert has no less than 19 national monuments, making it a treasure for those who value South Africa's rich historical and architectural heritage.

On the outskirts of Prince Albert lies a tranquil little gem of a cottage called Bid Huisie (Prayer House). Originally an old church, the exterior of this exclusive two-bedroomed cottage has been left untouched. Wooden shutters and white framed doors and windows offset the lilac grey walls of this delightful old building.



Bid Huisie's modified cottage interior offers homely self-catering accommodation for people seeking quiet, yet still wanting to be within walking distance to explore Prince Albert. Just a few days in this serene rural village with its hospitable inhabitants and you'll understand why so many people escape here to renew their spirits.

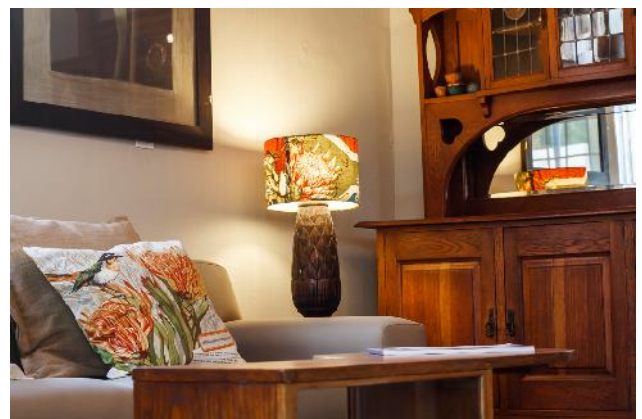
This well-appointed historical cottage in Prince Albert has also become a favourite stop over and in-between break for travellers, holidaymakers and businesspeople en route to either Cape Town or Gauteng.

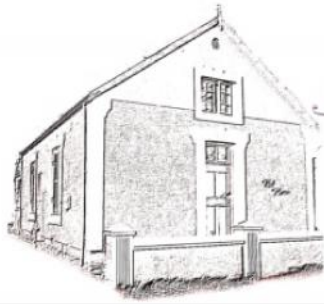
FACILITIES

Bid Huisie offers two beautifully decorated bedrooms with double beds to provide a comfortable stay for four people. A quaint shared bathroom features a shower, washbasin and toilet.

With its floral theme, Bid Huisie's restful open living space comprises a lounge and dining area with fully equipped kitchenette. Bright scatter cushions, light shades and paintings mingle with the cosy furnishings that include an antique six-seater dining table, wingback chairs and comfortable sofa.

The kitchenette has a fridge, microwave and stove. While all cutlery, crockery and bedding are provided, the cottage does not have a TV.





*Bid
Huisie*
PRINCE ALBERT



In the living area, guests can laze on the sofa after a busy day sightseeing, have a leisurely meal, or read a favourite book. Leading off from the cottage's living area is a covered patio overlooking a private enclosed Karoo garden. Alongside the patio is seating, a barbeque and a splash pool - ideal for the hot Karoo winter days. The covered patio with its view of a fragrant lavender rock garden, offers a peaceful spot to enjoy a barbeque, glass of wine or simply soak in the stillness as you gaze at the mountains in the distance and the nearby windmill.

What makes Bid Huisie special?

- Relaxing-self catering getaway for small families or friends in the tranquil Great Karoo.
- Perfect place to stop over when travelling between Gauteng and Western Cape.
- Historic two-bedroomed cottage within walking distance of Prince Albert's CBD.

ATTRACTIONS

Do not think there is nothing to do simply because you are in a small rural village in the Great Karoo! Here are just some of the many activities in and around Prince Albert:





In Prince Albert

- Have an ethereal experience on the famous Ghost Walk as you roam with the ghosts of this historic village and hear their stories.
- Visit the Soet Karoo shop that specialises in Muscadel. Local villages produce this sweet dessert wine in the small vineyard behind their house in Kerkstraat.
- Eat out at the nearby Prickly Pear or experience authentic Karoo culinary fare at African Relish, where you can enjoy traditional favourites such as cinnamon cake with fresh cream, biltong and butternut soap or slow braised lamb.
- Cheese lovers should not miss a visit to Gay's Dairy Farm. The farm produces delicious cheeses, dairy products and full cream milk. Cheese tasting and dairy tours by appointment.
- Savour the creativity of local inhabitants exhibiting their artwork at the Prince Albert Gallery.
- Enjoy a guided historical walk through the village.



Scenic and Outdoor adventures

- Explore one of the hiking trails on Grootwaterval Farm on foot, bicycle or horseback.
- Go cycling or mountain biking in the scenic mountains of the Swartberg Pass.
- Drive to the top of the Swartberg Mountain Pass, then hike down with your picnic lunch and enjoy a cold beer when you reach the river. This area also offers great opportunities to view various bird species.
- Enjoy a game drive with tea or an evening drink and dinner at Weltevrede Fig Farm.
- Experience an early morning 2km guided nature walk on a farm near Prince Albert to see Lithops and other small succulents, birds and insects.



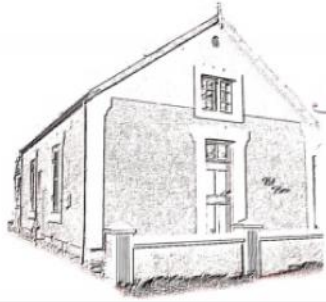
- Prince Albert is known for its spectacular night skies, so be sure not to miss an astral tour to view the celestial splendour of the Southern Hemisphere.
- Take a trip to the Swartrivier Olive Farm, a local family-run business to learn more about how they grow and process olives.
- Visit the Renu-Karoo veld restoration indigenous nursery 1.5km north of the village (near Swartrivier Olive Farm), open weekdays and by appointment during weekends.



Day outings

- Visit some of the wine farms in the area such as Fernskloof (producing certified organic wines), Meiringspoort or Bergwater in the Prince Albert valley.
- Take the John's Donkey day trip over the Swartberg or hike over the mountains into 'The Hell' with an accredited tour guide.
- Visit Weltevrede Fig Farm to see how locals pick and dry Adams figs during the season that runs from January to May.
- The Karoo National Park is a worthwhile visit and is two hours' drive away.
- Other nature outings include a visit to the Groot Swartberg Nature Reserve (around 30 minutes drive)





*Bid
Huisie*
PRINCE ALBERT



RACK RATES

1 October 2013 – 30 April 2014
1 May 2014 – 30 September 2014

R350 per person sharing per night, R500 single.
R350 per person sharing per night, R500 single.

KEY DEPOSIT: A R500.00 deposit is required in the event of any breakages or loss of any of the items found in your unit. Should there be any breakages or loss of any of the items in your unit, the deposit is then not returnable. If all is in order then your deposit will be returned on your departure.

SURCHARGE: A surcharge is levied to service the apartment.



CENTRAL RESERVATIONS

Tel: 087 820 5974
bookings@southofafrica.com
www.southofafrica.com

CHECK-IN ASSISTANCE

Elma Whiley 079 951 9496

DIRECTIONS



From Cape Town:

Drive north along the N1 towards Hugenote Tunnel towards Worcester. Proceed to De Doorns, Touws River and on to Laingsburg. 89km north of Laingsburg you will reach Prince Albert Road (Train station/ junction). Turn right onto the R407 towards the mountains and Prince Albert. After 45km you will enter the village. Pass the BP filling station, drive approximately 500 meters. Turn left into Meiring street. Bid Huisie is the second house on the right hand side.

From Oudtshoorn via Meiringspoort:

Take the N12 to De Rust and then drive through Meiringspoort. Pass the village of Klaarstroom. Approximately 5km further, turn left onto the R410 to Prince Albert. 45km drive takes you through the Prince Albert Valley towards the village of Prince Albert. When you enter the village: continue to drive on the main road for 1,5km - bear right at the dog's leg - after another 1,7km at Prickly Pear Restaurant on your right; you turn right into Meiring street. Bid Huisie is the second house on your right hand side.

From Oudtshoorn via the Swartberg Pass:

Drive out of Oudtshoorn along Baron van Reede Street towards the Cango Caves. 3km before the Cango Caves you will pass Wilgewandel Resort on your right. Turn left at the next turn (sign posted: Prins Albert and Swartberg Pass). You will pass the Matjiesrivier/ Red Stone Hills turnoff on your left. Continue straight on - the tar road becomes a gravel road, which winds up through the Swartberg Pass - stop and enjoy the view. At the T-junction, where you rejoin the tarred road, turn left. When you enter the village continue to drive on the main road for 1,5km - bear right at the dog's leg - after another 1,7km at Prickly Pear Restaurant on your right; you turn right into Meiring street. Bid Huisie is the second house on your right hand side.

GPS Coordinates:

Latitude: 33.21814 S

Longitude: 22.02901 E

